



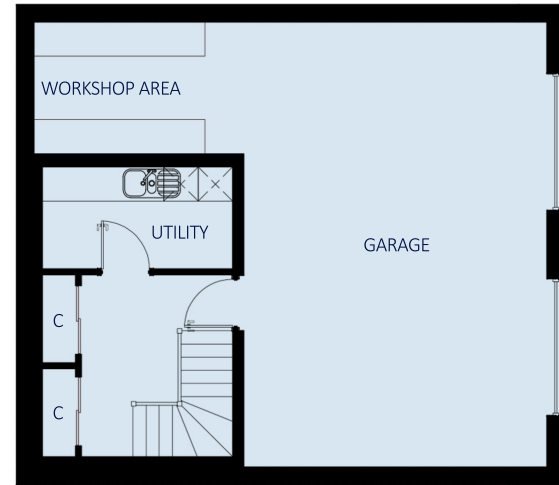
The

# Covesea B

Four bedroom split level house  
with double garage



GROUND FLOOR



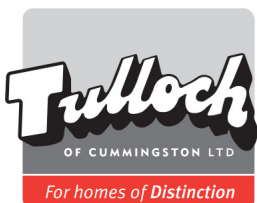
BASEMENT

# The Covesea<sup>B</sup>

## Four bedroom split level house with double garage

This enlarged version of the **Covesea** housetype offers a well laid out ground floor design including four bedrooms, with an en-suite and walk in wardrobe to the master bedroom, a spacious lounge and an open plan kitchen, dining and family area.

A double garage, workshop area, large utility room and integrated storage cupboards completes the basement level layout.



**Tulloch of Cummingston**  
 Tulloch House, Forsyth Street  
 Hopeman IV30 5ST  
 T: 01343 835 600 F: 01343 835 700  
[www.tullochofcummingston.co.uk](http://www.tullochofcummingston.co.uk)

### ROOM DIMENSIONS

Lounge	5320 x 4035	(17' 5" x 13' 3")
Kitchen / Dining / Family	8945 x 3510	(29' 4" x 11' 6")
Bathroom	1805 x 4035	( 5'11" x 13' 3")
Master Bedroom	3940 x 3520	(12'11" x 11' 7")
En-Suite	1805 x 1835	( 5'11" x  6' 0")
Walk In Wardrobe	1805 x 1580	( 5'11" x  5' 2")
Bedroom 2	3545 x 2990	(11' 8" x  9' 8")
Bedroom 3	3940 x 2830	(12'11" x  9' 3")
Bedroom 4	2815 x 2795	( 9' 3" x  9' 2")
Garage	5305 x 7800	(17' 5" x 25' 7")
Utility	3325 x 1785	(10'10" x  5'10")
Workshop Area	3675 x 2310	( 8' 3" x  8' 8")

### DESIGN OPTIONS

- > Sun Lounge extension to rear.
- > Open plan lounge/kitchen area.
- > Extension of floor area to provide larger bedrooms.
- > Patio / french doors to bedroom 3.

All room sizes are approximate and may vary due to nature of construction. The above details do not form any part of a contract and are for illustration purposes only. Housetype illustrations are indicative, elevational treatments may vary dependant on development, location and specification.