



The  
**Birnie<sup>C</sup>**

Three bedroom  
semi- detached house

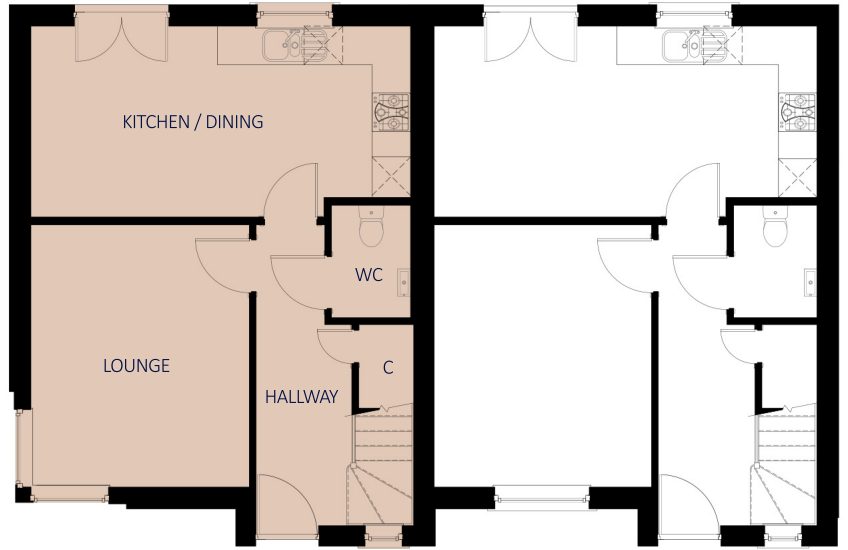
# The Birnie<sup>C</sup>

## Three bedroom semi-detached house

This attractive three bedroom semi-detached house provides a comfortable family accommodation over two levels offering a practical layout with ample built in storage to all bedrooms and hallways.

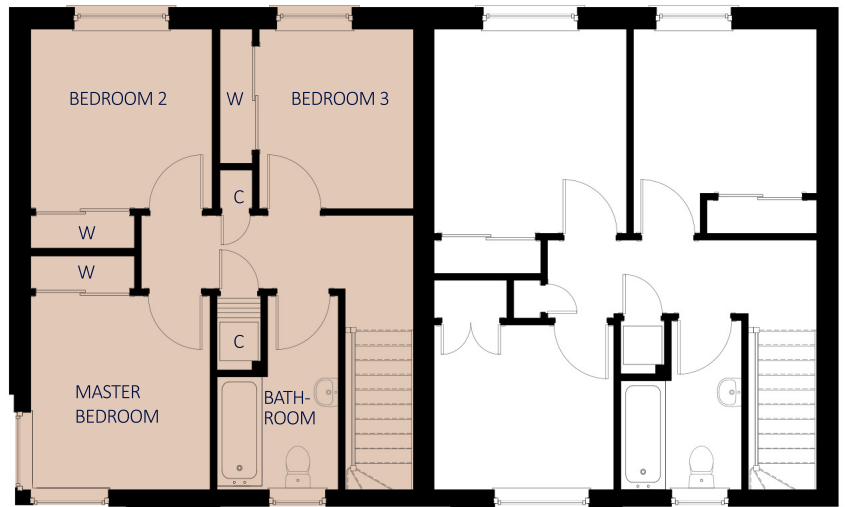
### DESIGN OPTIONS

- > Separate shower enclosure to bathroom



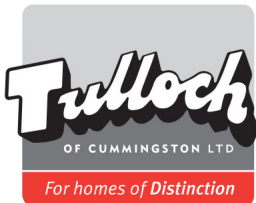
GROUND FLOOR

Lounge	3395 x 4080	( 11' 1" x 13' 5" )
Kitchen / Dining	5900 x 2970	( 19' 4" x 9' 9" )
WC	1225 x 1750	( 4' 0" x 5' 9" )



FIRST FLOOR

Master Bedroom	2790 x 3020	( 9' 1" x 9' 11" )
Bedroom 2	2820 x 2795	( 9' 3" x 9' 2" )
Bedroom 3	2400 x 2795	( 7' 10" x 9' 2" )
Bathroom	1885 x 3020	( 6' 2" x 9' 11" )



**Tulloch of Cummington**

Tulloch House, Forsyth Street

Hopeman IV30 5ST

T: 01343 835 600 F: 01343 835 700

[www.tullochofcummington.co.uk](http://www.tullochofcummington.co.uk)

All room sizes are approximate and may vary due to nature of construction. The above details do not form any part of a contract and are for illustration purposes only. Housetype illustrations are indicative, elevational treatments may vary dependant on development, location and specification.